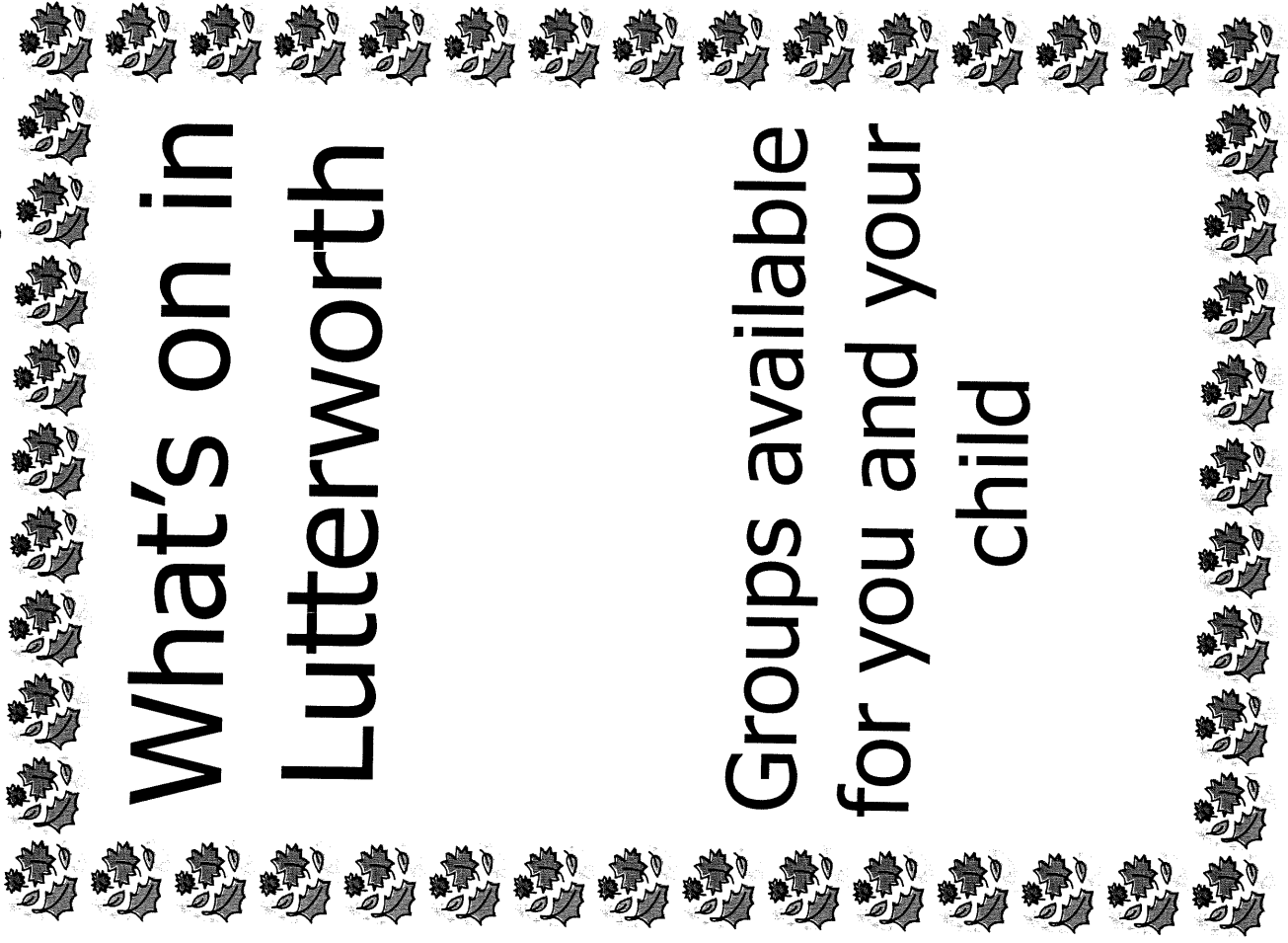




Extended Services

LEICESTERSHIRE

*together*



# What's on in Lutterworth

## Groups available for you and your child

## **Activities in Lutterworth**

### **Pre-Schools/Nurseries** (Most activities will incur a charge - please check before attending)

**Who:**  
**When:** Monday - Friday, 7.30am - 6pm  
**Where:** Alma Park, Wibtoft  
**Contact:** 01455 221918

**Who:**  
**When:** Monday - Friday, 7.30am - 6pm  
**Where:** St Mary's, Lutterworth  
**Contact:** 01455 554034

**Who:**  
**When:** Monday - Friday, 7.30am - 6pm  
**Where:** Hall Lane, Bitteswell  
**Contact:** 01455 556050

**Who:**  
**When:** Monday - Friday, 7.30am - 6pm  
**Where:** Elizabethan Way  
**Contact:** Helen - 07513 260284 or 07799 430859

**Who:**  
**When:** Monday - Friday, 9.30am - 12.30pm  
**Where:** Village Hall, Main Street, Ashby Parva  
**Contact:** Dawn - 07919 842120 or Nicky - 07788 534336

**Who:**  
**When:** Monday - Friday, 9am - 12pm  
**Where:** Village Hall, Main Street, Leire  
**Contact:** Caroline - 07719 600179

**Who:**  
**When:** Monday - Friday, 7.30am - 6pm  
**Where:** Lutterworth Community Pre-school, Bitteswell Road  
**Contact:** Caroline or Mandy - 01455 558241

**Who:**  
**When:** Monday - Friday, 9 - 12pm & 12 - 3pm  
**Where:** Dag Lane, North Kilworth  
**Contact:** Angela - 01858 880430

**Who:**  
**When:** Monday - Friday 9am - 12pm  
**Where:** Swinford Village Hall, Chapel Street, Swinford  
**Contact:** Mandy - 07786 127513

**Who:**  
**When:** Monday - Friday, 9.10am - 11.40am  
**Where:** Main Street, Ullesthorpe  
**Contact:** Rachel - 01455 208375



**Toddler Groups** (Most activities will incur a charge - please check before attending)

**Gilmorton Little Singers**

Who: Mondays, 10am - 11am  
Where: Gilmorton Village Hall  
Contact: 01455 557397

**Honeypots Tots**

Who: Mondays, 1 - 3pm  
Where: Husbands Bosworth Church  
Contact: 01858 881745

**Sparklers**

Who: Mondays, 1-3pm  
Where: Lutterworth Pavilion  
Contact: 01455 554728

**Mamites Toddler Group**

Who: Tuesdays, 10 - 11.30am  
Where: South Kilworth Village Hall  
Contact: 07710 381533

**Tumble Tots**

Who: Tuesdays, 9am - 1pm  
Where: Lutterworth Sports Centre  
Contact: 07720 953653

**Wriggly Readers**

Who: 10am - 10.30am  
Where: Lutterworth Library  
Contact: 0116 3053619

**Walcote Wrigglers**

Who: Tuesdays, 10.15am - 11.45am  
Where: Walcote Memorial Hall  
Contact: 01455 556554

**Young Parents Group**

Who: Lutterworth Children's Centre  
Where: Tuesdays, 10am - 12.00pm  
Contact: 0116 3055011

**Walton Toddler Group**

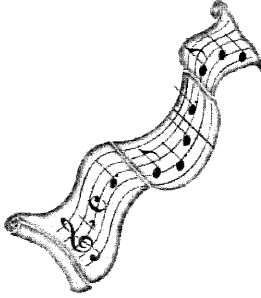
Who: Wednesdays, 10.30am - 11.30am  
Where: Walton Village Hall  
Contact: 0116 2748410 or 01455 552195

**Wednesday Group**

Who: Wednesdays, 1.30pm - 3pm  
Where: Wycliffe Methodist Memorial Hall  
Contact: 07950 911486

**Lets Go**

Who: Every other Thursday 1.45pm - 2.45pm  
Where: Church Gate Centre, St Mary's Church  
Contact: 01455 553526



**Who:**  
**When:** Thursdays, 10am  
**Where:** Lutterworth Sports Centre  
**Contact:** 01116 305 5011

**Who:**  
**When:** Thursdays, 10am - 12pm  
**Where:** Gilmorton Pavilion  
**Contact:** 01455 552799

**Who:**  
**When:** Thursdays, 9am - 12pm  
**Where:** Little Rainbows Pre-school  
**Contact:** 07834 730311

**Who:**  
**When:** Fridays, 9.45am - 11.45am  
**Where:** Lutterworth Pavilion  
**Contact:** 07834 730311



**Commercial Groups** ( Most activities will incur a charge - please check before attending)

**Who:**  
**When:** Wednesdays, 10am - 2pm  
**Where:** The Community Room, Little Rainbows Pre-school  
**Contact:** 07483 441885

**Who:**  
**When:** Fridays, 9.30 - 10.15am 3-5yrs, 10.30 - 11.15am +2yrs, 11.30 - 12.15 babies,  
1 - 2pm 1-2yrs  
**Where:** Lutterworth Sports Centre  
**Contact:** 01455 611110

**Who:**  
**When:** Mondays, 9.30am Toddlers, 10.10am Babies  
**Where:** Lutterworth Pavilion  
**Contact:** 07712 137733

**Who:**  
**When:** Thursdays, 10am Toddlers, 10.40am Babies  
**Where:** Husbands Bosworth Village Hall  
**Contact:** 07712 137733



**Other Groups** (Most activities will incur a charge - please check before attending)

**Who:**  
**When:** Wednesdays, 10am & 2pm  
**Where:** Lutterworth Health Centre  
**Contact:** Dawn Francis - 01455 554422

**Who:**  
**When:** Thursdays, 11am - 12pm  
**Where:** Lutterworth Sports Centre  
**Contact:** 01455 200800

**Who:**  
**When:** Mondays, 10.15 - 11.45am  
**Contact:** 01858 467982

Note: Please be aware that none of these groups are affiliated with the Lutterworth Sure Start Centre. Please do not take a groups inclusion in this leaflet as a recommendation of their services. Please feel free to let us know if any of the information contained in this leaflet is inaccurate.